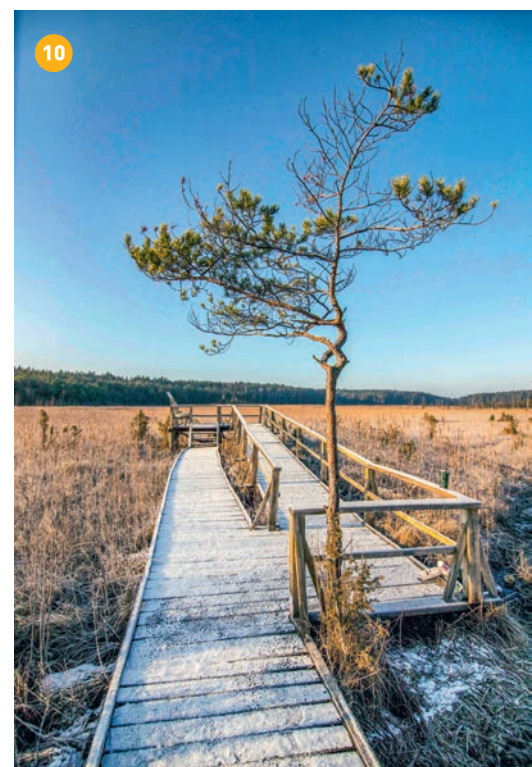
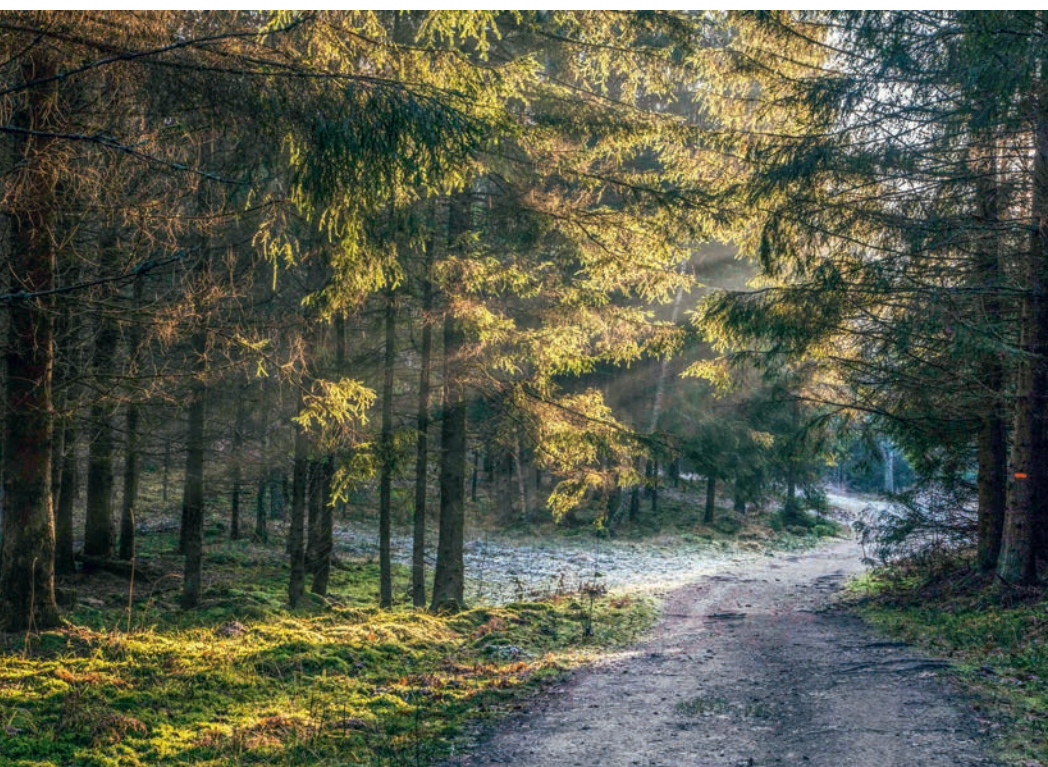




Kurtuvėnai – Šaukėnai

Natural wonders in Kurtuvėnai Regional Park

Along forest paths and small roads, the Forest Trail leads through Kurtuvėnai Regional Park. It is equipped with nature trails. From Kurtuvėnai, the Forest Trail leads along a beautiful tree alley and further along a small country trail winds between fish ponds, small hills overgrown with meadows, until it reaches the forest again. The trail turns around Vainagiai village, leads along a wooden footbridge through the wetland and reaches the castle mound on the shore of Vainagiai lake. For the next 8 km to Šaukėnai, it continues as a small forest road and, before entering the Šaukėnai small town, surrounds the northwestern shore of Juodlė lake. In Šaukėnai small town, the Forest Trail continues along Juodlės street.



PRACTICAL INFORMATION

..... 16 km

🕒 4 – 6 h

🚩 Kurtuvėnai, at Kurtuvėnai church of St. Jacob the Apostle

🚩 Šaukėnai center nearby the library

📍 Kurtuvėnai – Vainagiai –
Gabriejoliė – Šaukėnai



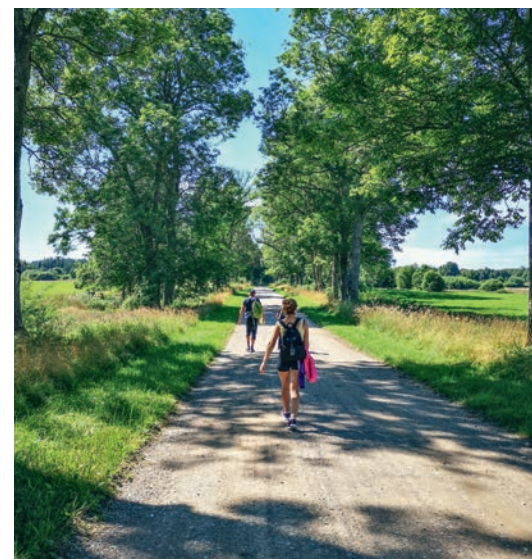
Small forest trails and small forest roads, wooden footbridges in wet places, asphalt in Šaukėnai



Easy



In this section, the Forest Trail intersects with other hiking routes. The markers should be followed carefully and it is advisable to use GPX files. Catering services are available only in Kurtuvėnai village, shops – in Kurtuvėnai and Šaukėnai.



NATURE

On the south-eastern edge of Juodlė lake there is a low marsh – transition marsh ecosystem, which can be seen along the Juodlė cognitive trail. They formed by flooding a stream flowing from the lake. Low marshes, as well as high marshes and transition marshes, are very important wetlands, an important habitat for many plant, fungi and animal species. Large wetlands not only affect the local microclimate, but also maintain a constant humidity regime in the wider area. After winter and rain, they accumulate water like large sponges, and then slowly “give it back” to springs, rivers and streams. Wetlands are not only marshes, but also wet forests – black alder bogs, swamps and quagmires, overflowing meadows, shallow and overgrown lakes, swampy river deltas and shallow sea area. Wetlands can be both natural and man-made. Wetlands also play an important role as natural filters, as they purify water from heavy metals and nutrients that leak from agricultural lands. Bogs and other wetlands with wooden footbridges are interesting places to explore and observe nature.

WORTH SEEING!

- 1 Kurtuvėnai Manor barn.** Kurtuvėnai Manor is one of the oldest manors in Lithuania. The most valuable building of the restored manor house complex is a unique 18th century building – the baroque wooden barn. +370 61829964; GPS: 55.82616, 23.04805
- 2 Kurtuvėnai Regional Park Visitor center.** Provides information about places to visit, tourism services. The visitor center has an exposition “Landscape Diversity”, which introduces the values of the regional park. +370 61829964; GPS: 55.82625, 23.04932
- 3 Horse Museum.** Located in the stables of Kurtuvėnai Manor. The horse-farm has over 30 horses. It is possible to go horse-back riding, ride in an authentic carriage, cart or two-wheeled cart. Educational programs and trips along the routes of the regional park are organized. +370 64033444; GPS: 55.82540, 23.05134
- 4 Kurtuvėnai mound (Kapa).** GPS: 55.82645, 23.04365
- 5 Vainagai forestry rhododendron farm.** A rhododendron nursery has been established in Vainagai, in a natural pine forest. The exhibition is dominated by rhododendrons, which grow abundantly in three geographical regions – Asia, North America and Europe. GPS: 55.80698, 22.99791
- 6 Vainagai mound.** The Vainagai mound surrounded by swamps dates back to the beginning of the second millennium. It was not inhabited and the boulders found on the castle mound indicate that it was probably a place of worship. GPS: 55.80202, 22.99392



- 7 Vainagai educational trail.** The circular route trail in Vainagai Landscape Reserve introduces the woodland key habitats and forest diversity. GPS: 55.80409, 22.99388
- 8 Pustlaukis pit.** In the Pustlaukis geomorphological nature reserve, there have been preserved rare relief forms – thermokarst pits, also called devil pits. The most impressive of them is the Pustlaukis pit. GPS: 55.80738, 22.97158
- 9 Juodlė lake.** Lake surrounded by Juodlė forests. It breeds about 30 species of birds. Since 1967 this lake has been declared a bird reserve. GPS: 55.81587 22.92069
- 10 Juodlė cognitive path.** One of the most beautiful paths in Kurtuvėnai Regional Park. Here you can get to know the landscape, the main forest habitats, wetlands, rare plant and animal species. GPS: 55.81603, 22.92050
- 11 Šaukėnai Local History Museum.** There is an exposition that tells about the history of the town and the people who lived here. An exposition of a farmstead has been set up. +370 65763149; GPS: 55.81094, 22.88905

SERVICES

Accommodations

- 1. Camping “Kurtuvėnai”,** +370 41370333; GPS: 55.82682, 23.04663
- 2. Association “Šaukėnų miestelio bendruomenė”,** +370 68224532; GPS: 55.81415, 22.92088

Catering

None in this section.

Shops

None in this section.

Pharmacies

None in this section.

Public transport

Current bus routes and timetables:

www.kelmesautobusai.lt,

www.autobusbilietai.lt

(here is a bus on the route Kurtuvėnai–Šaukėnai).

Resting areas

- 1. Vainagai tree nursery recreation area,** (if you are resting, give a message about it by calling the telephone indicated on the stand), GPS: 55.80697, 22.98522
- 2. At Juodlė lake,** GPS: 55.81384, 22.92087

TOURISM INFORMATION

- i Kurtuvėnai Regional Park Visitor Center,** Parko street 2, Kurtuvėnai, www.krpd.lt, +370 61829964; GPS: 55.82625, 23.04932
- i Kelmė Tourism and Business Information Center,** Birutės street 9, Kelmė, www.infokelme.lt, +370 42761430; GPS: 55.63066, 22.93745
- i Šiauliai District Tourism and Business Information Center,** J. Basanavičiaus street 7, Kuršėnai, www.siauliurajonas.lt, +370 41584486; GPS: 56.00349, 22.93592

